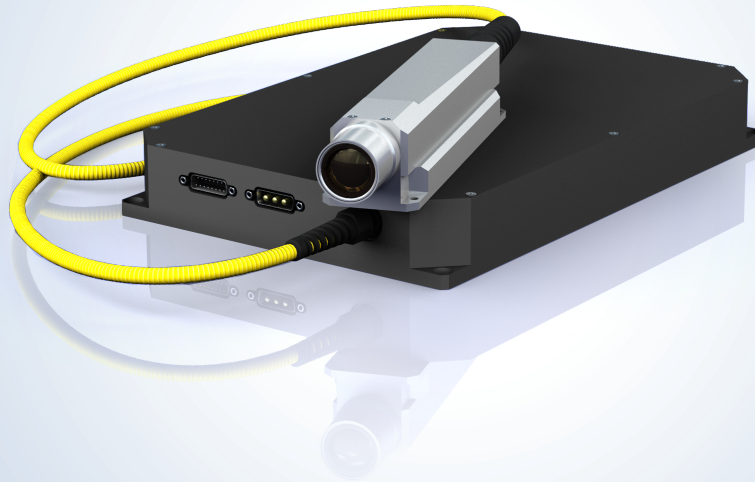


VLM Series

Visible CW Fiber Lasers

NEW PRODUCT



Applications

- ▶ Defense & Security
- ▶ Entertainment
- ▶ Material Processing
- ▶ Medical Diagnostics/Therapy
- ▶ Holography
- ▶ Laser Guide Star Adaptive Optics
- ▶ Spectroscopy
- ▶ Flow Cytometry



Features

- ▶ Choice of Wavelength 560-725 nm
- ▶ Output Power up to 15 W
- ▶ Beam Quality $M^2=1.1$
- ▶ Telecom Reliability
- ▶ Compact & Low Cost
- ▶ Industrial Performance

IPG Photonics' NEW VLM Series is a family of highly-efficient, single-mode, visible CW fiber lasers with output powers up to 15 W. Customers can select a central wavelength in the range 560-725 nm. VLM series lasers are based on IPG's efficient and reliable fiber laser technologies and feature a super-compact lightweight optical head, connected with a fiber cable to a small air-cooled control module. The all fiber construction allows for full range of output power without changes in power stability and beam mode parameters.

VLM Series

Visible CW Fiber Lasers

Optical Characteristics

Typical Central Wavelength ¹ , nm	560, 589 and 623
Linewidth FWHM, nm	0.1
Mode of Operation	CW
Average Power, W	up to 15
Power Tunability, %	10-100
Power Stability ² , %	±1
Polarization	Linear
Beam Quality, M ²	1.1
Output Beam Diameter (1/e ²), mm	<2

¹ Custom central wavelengths, 560-725 nm range, available upon request

² Over 5 hours, T= const

General Characteristics

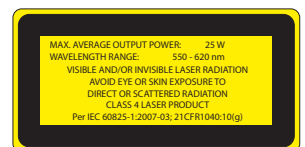
Module Dimensions ¹ , mm	325 x 217 x 43
Optical Head Dimensions, mm	50 x 233 x 46
Cooling	Air-cooled, Thermoconductive Bottom
Supply Voltage, VDC	24
Power Consumption, W	<480

¹ 1 g Rack-mountable units with AC Power
Available upon Request

+1 (508) 373-1100; sales.us@ipgphotonics.com
+49 2736 44200; sales.europe@ipgphotonics.com (all European Inquiries)

www.ipgphotonics.com

Legal notices: All product information is believed to be accurate and is subject to change without notice. Information contained herein shall legally bind IPG only if it is specifically incorporated into the terms and conditions of a sales agreement. Some specific combinations of options may not be available. The user assumes all risks and liability whatsoever in connection with use of a product or its application. IPG, IPG Photonics, The Power to Transform and IPG Photonics' logo are trademarks of IPG Photonics Corporation. © 2014-15 IPG Photonics Corporation. **All rights reserved.**



19, 19a, 20

The Power to Transform®

rev. 06/15